

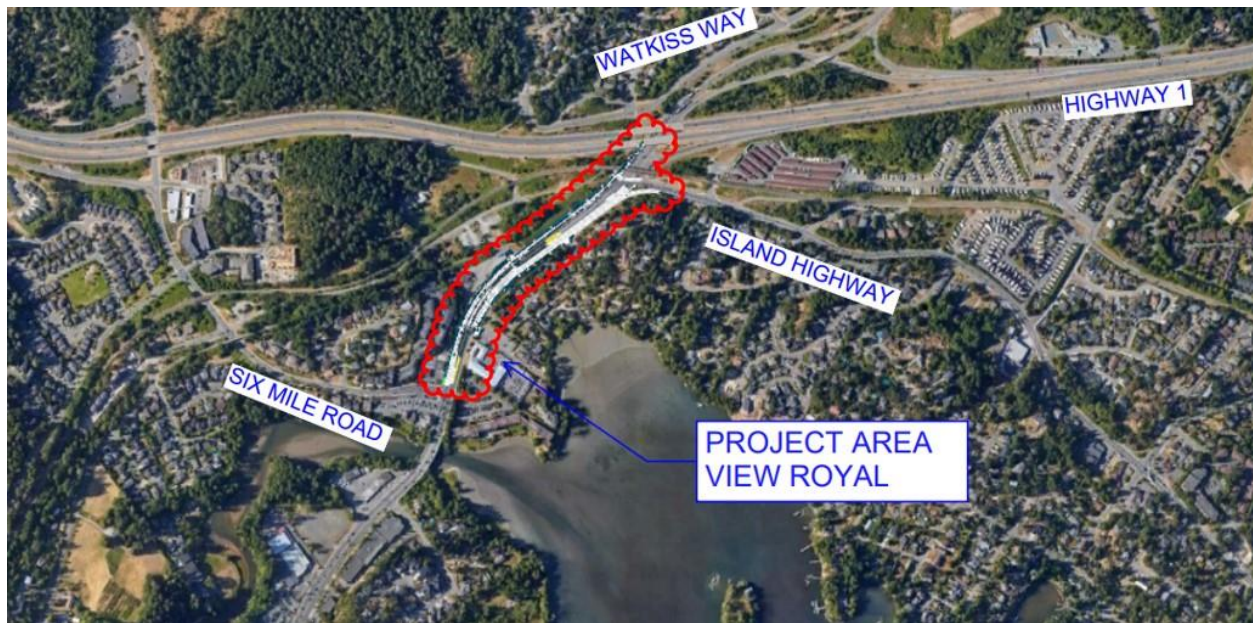
## **Island Highway Factsheet**

### **Project Name and Description:**

#### *Island Highway Transit Priority Upgrade Project*

BC Transit has received funding from the federal, provincial and local governments for infrastructure upgrades along the Island Highway that will support future RapidBus service through the Westshore. The upgrades in View Royal will help support the larger, overarching goals for RapidBus throughout the region.

Phase 1 of the project scope includes dedicated transit and bike lanes on the Island Highway in both travel directions in View Royal and phase 2 in will include queue jump lanes on the Island Highway in both travel directions at Wale Road in Colwood (construction dates to be confirmed).



### **Duration of Work and Potential Impacts:**

The construction for the View Royal section of the project starts in June and is expected to be completed in winter 2024/25. During construction, some traffic impacts and delays can be expected, but local access to businesses in the area will be maintained and accessible pedestrian detours will be in place.

### **Contact:**

For questions and comments, please email [islandhighwayupgrades@bctransit.com](mailto:islandhighwayupgrades@bctransit.com)